

MERCURE

ROMA WEST

A modern hotel lobby with a reception desk, seating area, and large windows. The reception desk has two counters labeled 'PRIORITY DESK' and 'GUESTS DESK'. There are several potted plants and a seating area with beige chairs and small tables. Large windows in the background offer a view of the city.

Your Business Hotel in Rome

Strategically located to explore the many faces of the Eternal City, the Hotel Mercure Roma West offers exclusive spaces and services tailored for MICE, making it the ideal destination for business stays in the capital.

Its recently renovated interiors and abundant natural light enhance the modern and functional design of every space, creating the perfect setting to work, host an informal meeting, or unwind with a book in our social areas.



Exclusive Services

A modern and refined 4-star hotel, perfect for business travelers, offering a range of exclusive services:



COFFEE MAKER



SKY HOTEL TV



COMPLIMENTARY WATER



FREE WI-FI



AMENITIES / PRIVILEGE AMENITIES



EXPRESS LAUNDRY SERVICE



ROOM SERVICE



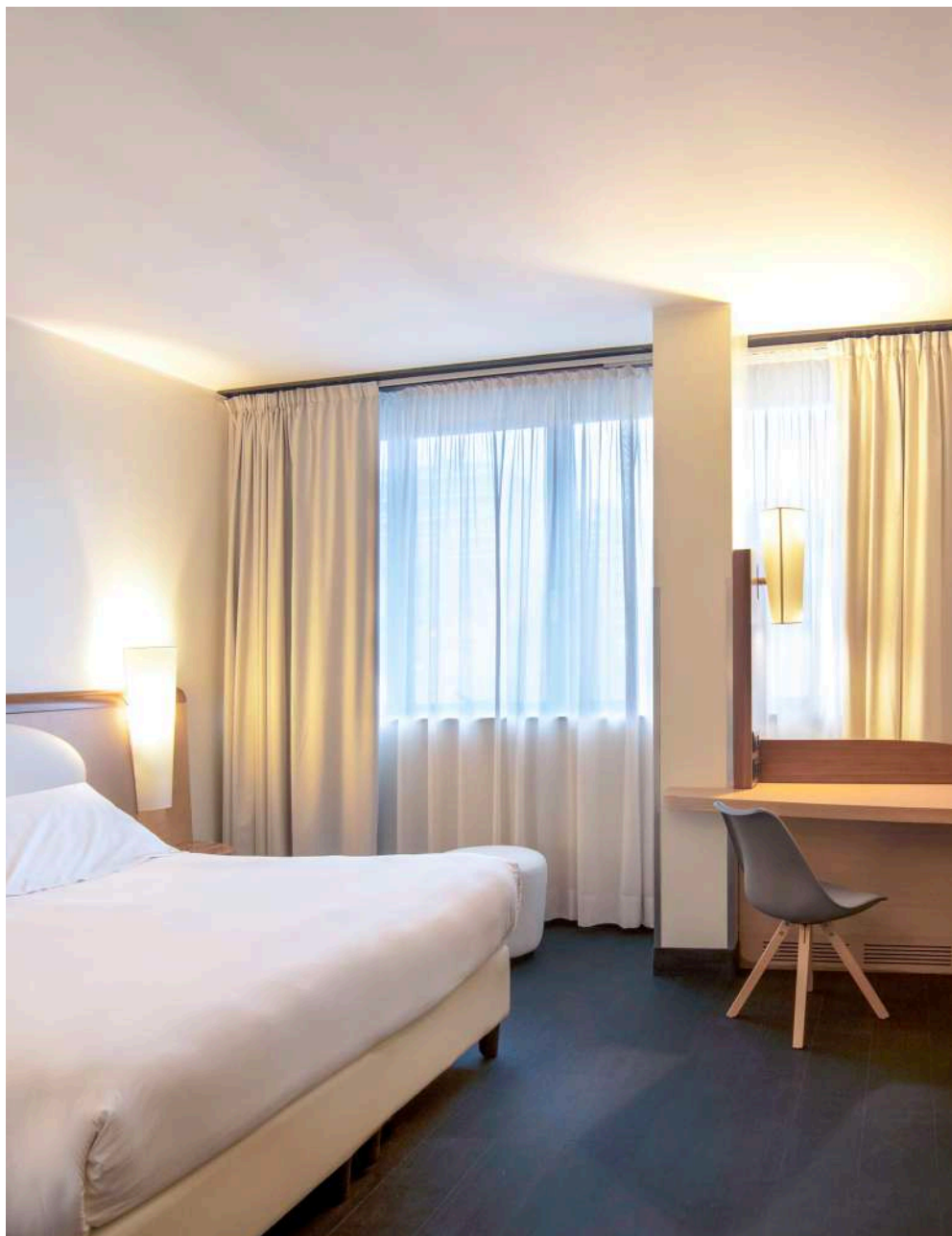
FREE SHUTTLE SERVICE



CONNECTION AREA



PRIVATE GARAGE



Rooms & Suites

240 rooms and suites equipped with every comfort, designed to be both functional and welcoming throughout your stay. Our Junior Suites and Suites are ideal for those who seek extra space and superior comfort..

132

STANDARD

89

SUPERIOR

14

JUNIOR SUITES








03

FAMILY SUITES

02

EXECUTIVE SUITES

GUEST SERVICES

-  COFFEE MAKER
-  SKY HOTEL TV
-  COMPLIMENTARY WATER
-  FREE WI-FI
-  AMENITIES / PRIVILEGE AMENITIES
-  EXPRESS LAUNDRY SERVICE
-  ROOM SERVICE

A Mediterranean Cuisine

Mediterranean flavors blend with traditional Lazio and Roman cuisine in the seasonal menu of MChef Restaurant, open all day with continuous service to satisfy every craving at any time.

Before or after dinner, don't miss the chance to enjoy a drink crafted with passion by the bartenders at Bar Divinus.

RESTAURANT

MCHEF
RESTAURANT

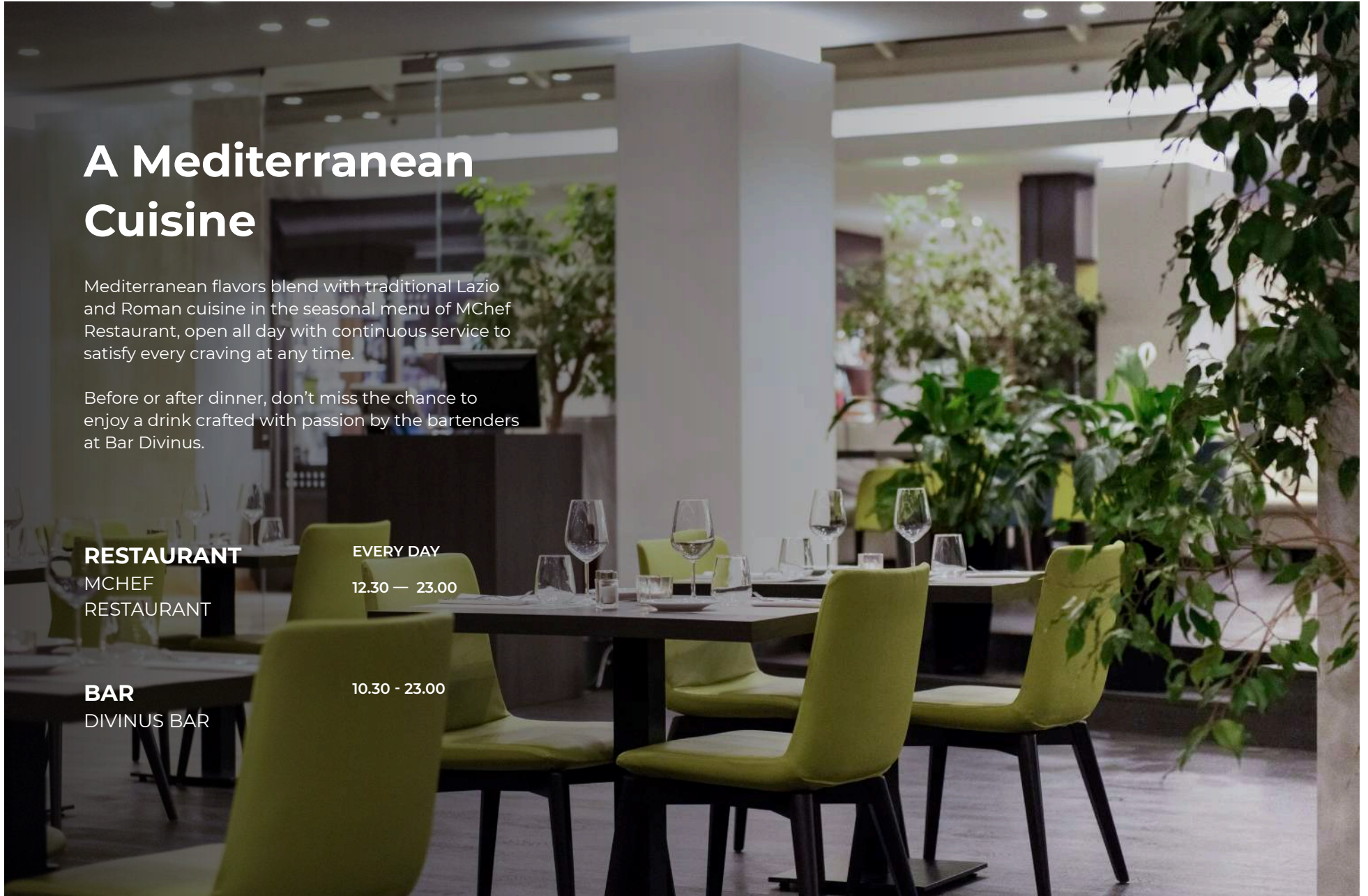
EVERY DAY

12.30 — 23.00

BAR

DIVINUS BAR

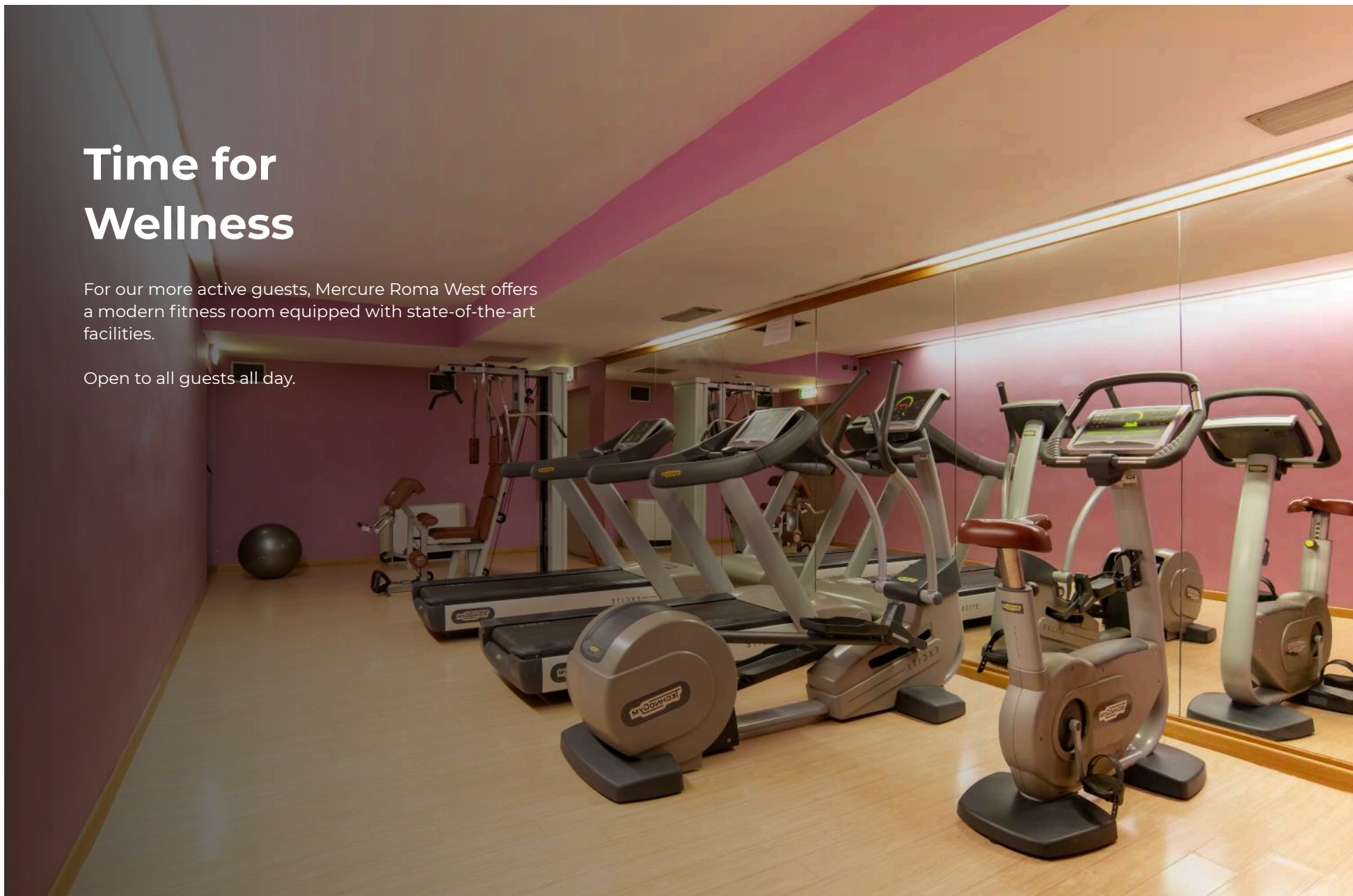
10.30 - 23.00



Time for Wellness

For our more active guests, Mercure Roma West offers a modern fitness room equipped with state-of-the-art facilities.

Open to all guests all day.



We Give Space to Your Projects

Spacious and bright venues ensure a pleasant and efficient event experience. Our 15 modular meeting rooms, all with natural light, are the perfect setting for important decisions. Where ideas turn into projects, and projects become reality.

2000

SQM CONGRESS
AREA

300

SQM EXHIBITION
SPACE

15

MEETING ROOMS

850

SEATS

congress@mercureromawest.com

Meetings and events

	AREA	U-SHAPE	BOARD	SCHOOL DESKS	PLATEA	COCKTAIL
DOMITILLA	46	15	20	--	--	--
AURELIA	52	15	18	18	30	30
LIVIA	52	15	18	18	30	30
OTTAVIA	52	15	18	18	30	30
AGRIPPINA	45	15	18	18	30	30
AVENTINO	87	22	22	35	60	60
PALATINO	62	20	18	18	30	30
ESQUILINO	77	22	22	35	60	60
CELIO	62	20	18	18	30	30
CAPITOLINO	88	22	22	35	60	62



Meetings and events

	AREA	U-SHAPE	BOARD	SCHOOL DESKS	PLATEA	COCKTAIL
ROMOLO & REMO	400	100	100	210	450	500
ROMOLO	242	60	60	126	200	250
REMO	187	40	100	84	150	200
ADRIANO	97	30	30	35	60	70
TRAIANO	53	15	18	22	30	30
MARCO AURELIO	97	30	30	35	60	60



Where We Are

Hotel Mercure Roma West is strategically located near EUR, the New Rome Fair, the Palalottomatica arena, and just a short distance from Fiumicino Airport.

FROM FIUMICINO AIRPORT:

- **Free Airport Shuttle**
To/from Fiumicino Airport and the "Eur Fermi" metro station
- **By car**
Exit No. 26 of the GRA (Pontina - Pomezia - Latina), take Via Pontina and exit at "Spinaceto - Mostacciano"
- **By Public Transport**
FLI train towards "Orte" to "Roma-Ostiense"
Metro Line B towards "Laurentina" to "EUR Fermi" station
Bus 705 towards "Piermarini" to "Cefalonia - Giordano"

FROM TERMINI STATION:

- **By Public Transport**
Metro Line B towards "Laurentina" to "EUR Fermi" station
Bus 705 towards "Piermarini" to "Cefalonia - Giordano"

FROM THE GRANDE RACCORDO ANULARE (GRA):

- **By car**
Exit No. 26 (Pontina - Pomezia - Latina), take Via Pontina and exit at "Spinaceto - Mostacciano"



LEGEND

1. Rome Fiumicino airport
2. New Rome Fair

3. Palalottomatica
4. Termini Station

5. Rome Ciampino Airport
6. Cinecittà

MERCURE

ROMA WEST