

PATRIA

PALACE IN LECCE

★★★★★

---



THE LEADING HOTELS  
OF THE WORLD®

*#YourMainDoorToSalento*



The call  
of history



# Heritage & Design

The elegant and proud image of the Patria Palace was born in the 18th century when the Marquises d'Anna Petrarolo chose the heart of Lecce and the style of Mauro Manieri to build their residence. The Patria Palace preserves all of this.

The richness of Baroque, the elegance of a historic noble residence, the spirit of true hospitality, the enthusiasm of Italian style, and the desire for discovery shared with every Guest who has experienced moments of rare beauty in Lecce.

5  
STARS

38  
ROOMS & SUITES

3  
BANQUETING LOCATIONS

2024  
LAST RESTYLING





# In the Heart of Lecce

The Palace is nestled in the heart of Lecce, where its historic alleys open onto Piazzetta Riccardi. As you arrive at the palace gates, the Salento Baroque begins to reveal itself to travelers through its rich architectural details. And when you gaze beyond the square, it unfolds in all its splendor with the breathtaking Basilica of Santa Croce. This masterpiece serves as an extraordinary backdrop for dreamy awakenings in some of our suites and vibrant evenings on our rooftop.

# A Timeless Stay

Elegant rooms with a refined aesthetic, designed to welcome you with every comfort and let you experience the unique charm of a stay in the heart of Lecce's most enchanting Baroque.

6

SUPERIOR

5

DELUXE WITH TERRACE

4

COMFORT

4

JUNIOR SUITES

5

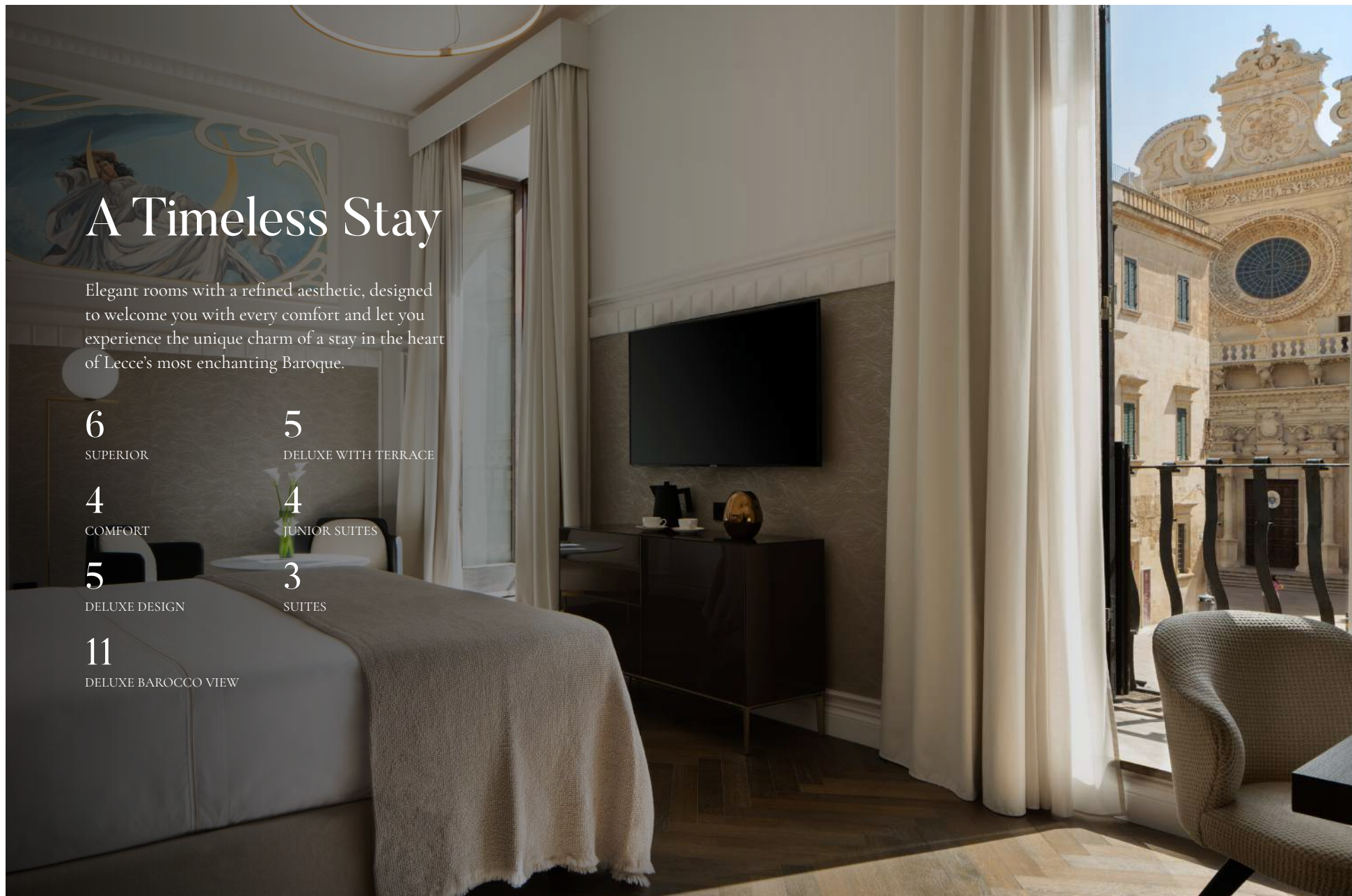
DELUXE DESIGN

3

SUITES

11

DELUXE BAROCCO VIEW



# Rooms & Suites



## Superior

A cozy room with a view of the charming alleys, featuring Art Deco furnishings and a marble bathroom.

*Average size: 24 sqm  
Double or Twin bed  
Internal view  
Elegant marble bathroom  
Bathtub or shower*



## Comfort

A spacious room, perfect for families, featuring an internal view, Art Deco furnishings, and a marble bathroom.

*Average size: 28 sqm  
Double or Twin bed  
Internal view  
Elegant marble bathroom  
Bathtub or shower*



## Deluxe Design

A spacious room with a modern design, featuring an internal view and a large marble bathroom.

*Average size: 28 sqm*

*Double bed*

*Internal view*

*Elegant marble bathroom*

*Spacious walk-in shower*



## Deluxe Barocco View

A bright and elegant room with a stunning view of Santa Croce, featuring parquet flooring and a marble bathroom.

*Average size: 24 sqm*

*Double or Twin bed*

*View of the Basilica of Santa Croce*

*Elegant marble bathroom*

*Spacious walk-in shower*





### Deluxe With Terrace

A refined room featuring a private terrace overlooking the city, grangiola flooring, and a marble bathroom.

*Average size: 25 sqm*

*Double bed*

*Private terrace*

*City view*

*Elegant marble bathroom*

*Spacious walk-in shower*



### Junior Suite

A spacious and bright suite with a view of the charming alleys, featuring parquet flooring and an elegant marble bathroom.

*Average size: 34 sqm / 366 sqf*

*Comfortable Double Bed*

*View on the old city alleys*

*Elegant marble bathroom*

*Large walk-in shower*

*Comfortable lounge area*



## Junior Suite Santa Croce

The suite with the most breathtaking view in Lecce. What makes it truly unique is its dual privileged outlook over the stunning Basilica of Santa Croce.

*Average size: 45 sqm*

*Double Bed*

*Dual view of the Basilica of Santa Croce*

*Elegant marble bathroom*

*Spacious walk-in shower*

*Bathub*

*Cozy lounge area*



## Suite Tito Schipa

An elegant and spacious suite featuring a large living area, parquet flooring, a marble bathroom, and a private terrace.

*Average size: 60 sqm*

*King-size bed*

*Private terrace*

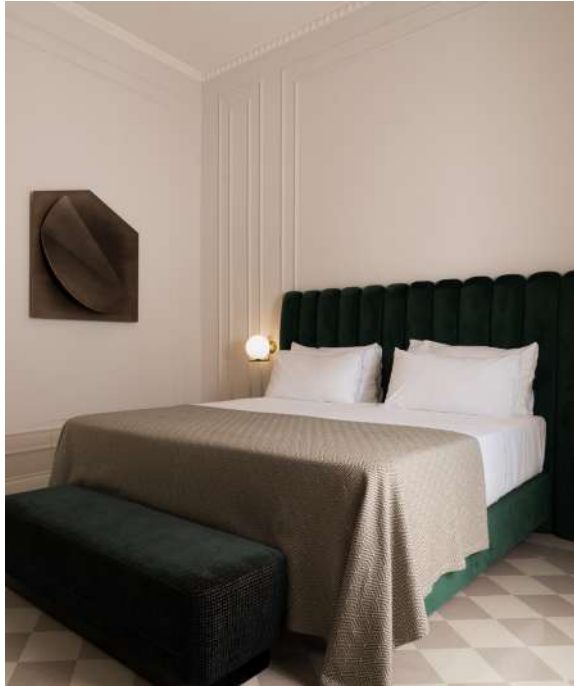
*View of the historic city alleys*

*Elegant marble bathroom*

*Spacious walk-in shower*

*Comfortable lounge area*





### Suite Ernesto Barba

A spacious suite with a living area and high ceilings, featuring graniglia flooring and an elegant marble bathroom.

- Average size: 55 sqm*
- King-size bed*
- Private internal terrace*
- View of the historic city alleys*
- Elegant marble bathroom*
- Spacious walk-in shower*
- Comfortable lounge area*



### Suite Terrace <sup>With Pool</sup>

Our most captivating suite, featuring decorated graniglia flooring, a marble bathroom, and a private 80 sqm terrace with a jacuzzi overlooking Santa Croce.

- Average size: 45 sqm*
- Double bed*
- Private 80 sqm terrace*
- View of the city and the Basilica of Santa Croce*
- Elegant marble bathroom with walk-in shower*
- Comfortable lounge area*



The taste  
of beauty



# Bar & Restaurants



## Sira Rooftop Bar

The most breathtaking terrace in Lecce, offering a stunning view of the Basilica of Santa Croce—the perfect backdrop for our renowned aperitivo during the warm season.

*Lounge Bar: 30 pax*  
*Standing Cocktail 100 pax*



## Atenze Restaurant

A gastronomic journey that takes every guest on a tasting experience through Salento, with bold flavors, refined tastes, and creative combinations, always respecting the authenticity of the ingredients.

*Sira Terrace: 20 pax*  
*Main Restaurant: 60 pax (outdoor seating: 20 pax)*

## Barba's Natural Lounge

The most beautiful lounge in Lecce. Savor a signature drink while the shifting shades of light perform a magical dance on the Basilica's façade.

*15 pax*





**PATRIA**

PALACE IN LECCE

★★★★★



THE LEADING HOTELS  
OF THE WORLD®

Piazzetta Riccardi 13  
73100 Lecce – Puglia/IT

+ 39 (0) 832 245 111

[info@patriapalace.com](mailto:info@patriapalace.com) | [patriapalace.com](http://patriapalace.com)

*member of*



**HO COLLECTION**  
INSPIRED HOTELS